



VILLA PROJECT

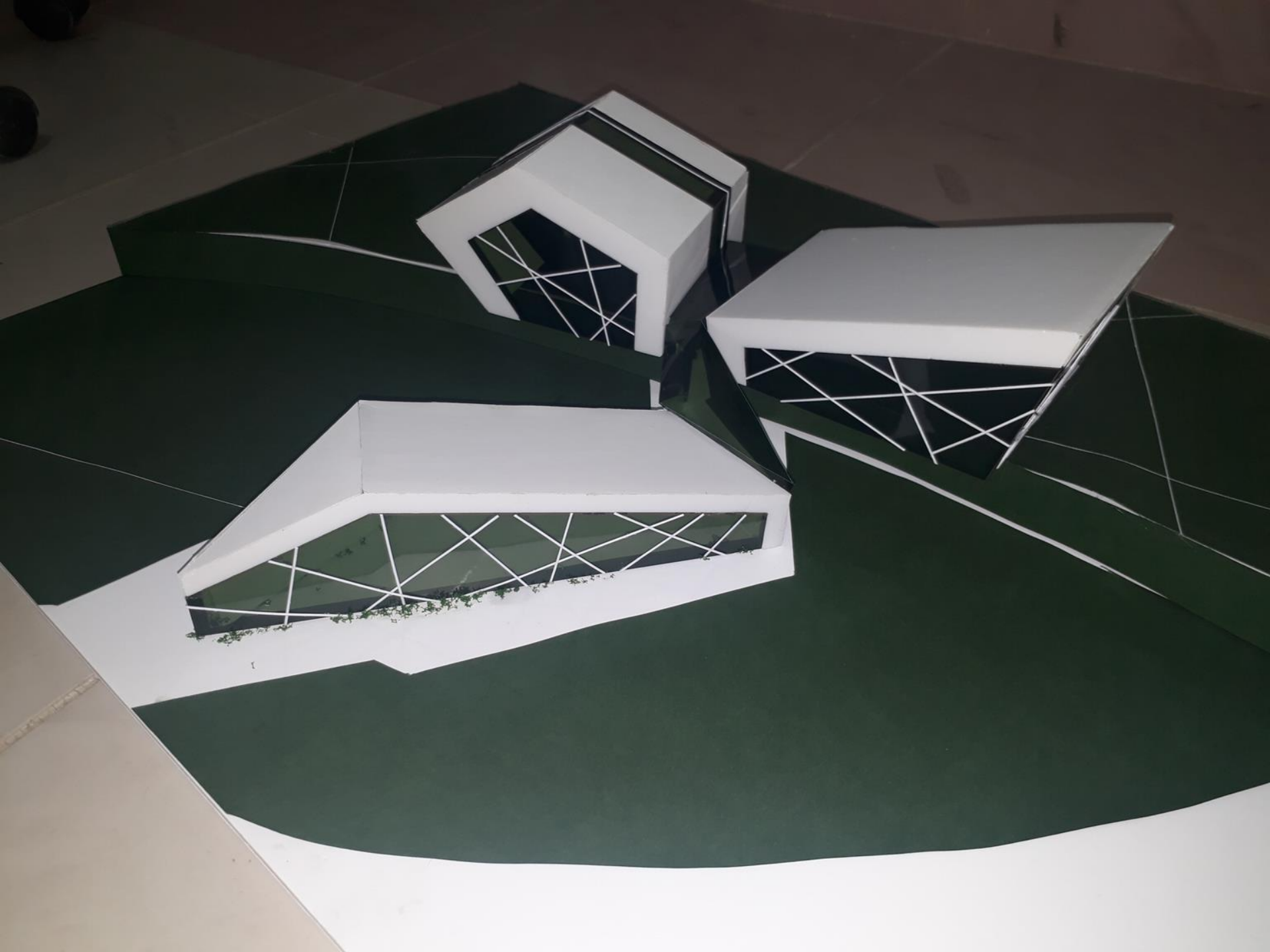


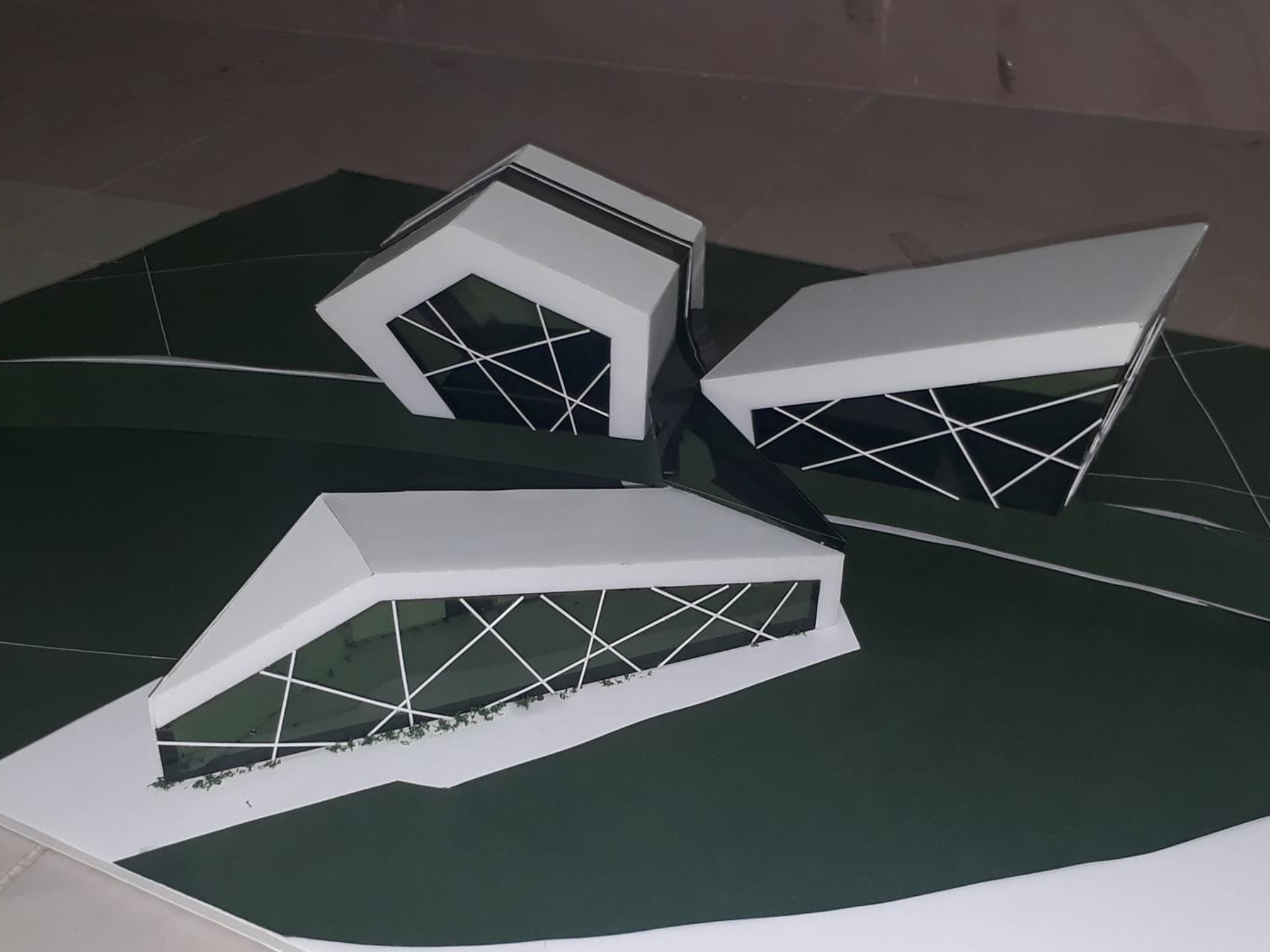
Designed By: Avan Star

Supervised by:
M. Suzan Tahir
M. Ahmad Ismail
M. Snoor

Second Stage (B)
Architecture Department. 2019







SALAHADDIN UNIVERSITY
COLLEGE OF ARCHITECTURE
ENGINEERING DEPARTMENT

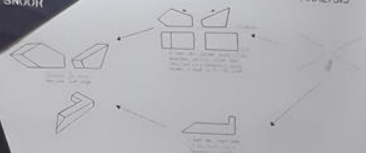
VILLA PROJECT
DESIGNED BY: AWAN STAR

SUPERVISED BY:
M SUZAN TAHIR
M AHMAD ISMAIL
M SNOOR

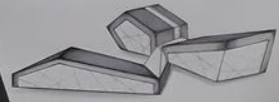
CONCEPT
THE MOUNTAIN



ANALYSIS



3D MODEL



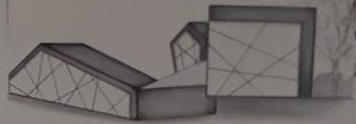
GROUND FP
Scale: 1:50



SOUTH ELEVATION



NORTH ELEVATION



EAST ELEVATION

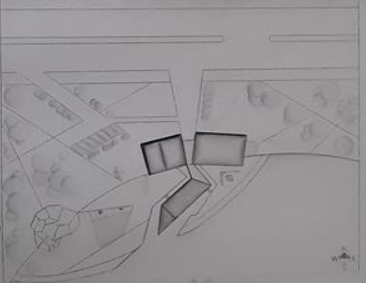


WEST ELEVATION

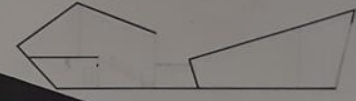
S
I
T
E

P
L
A
N

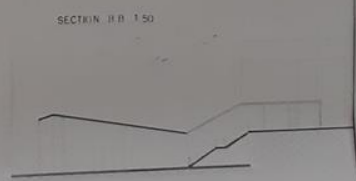
1200



FIRST FP
Scale: 1:50



SECTION A-A 1:50



SECTION B-B 1:50



INTERIOR DESIGN
MASTER LIVING

BASEMENT FP
Scale: 1:50



SALAHADDIN
COLLEGE OF
ARCHITECTURE

UNIVERSITY
ENGINEERING
DEPARTMENT

CONCEPT:
THE MOUNTAIN

VILLA PROJECT

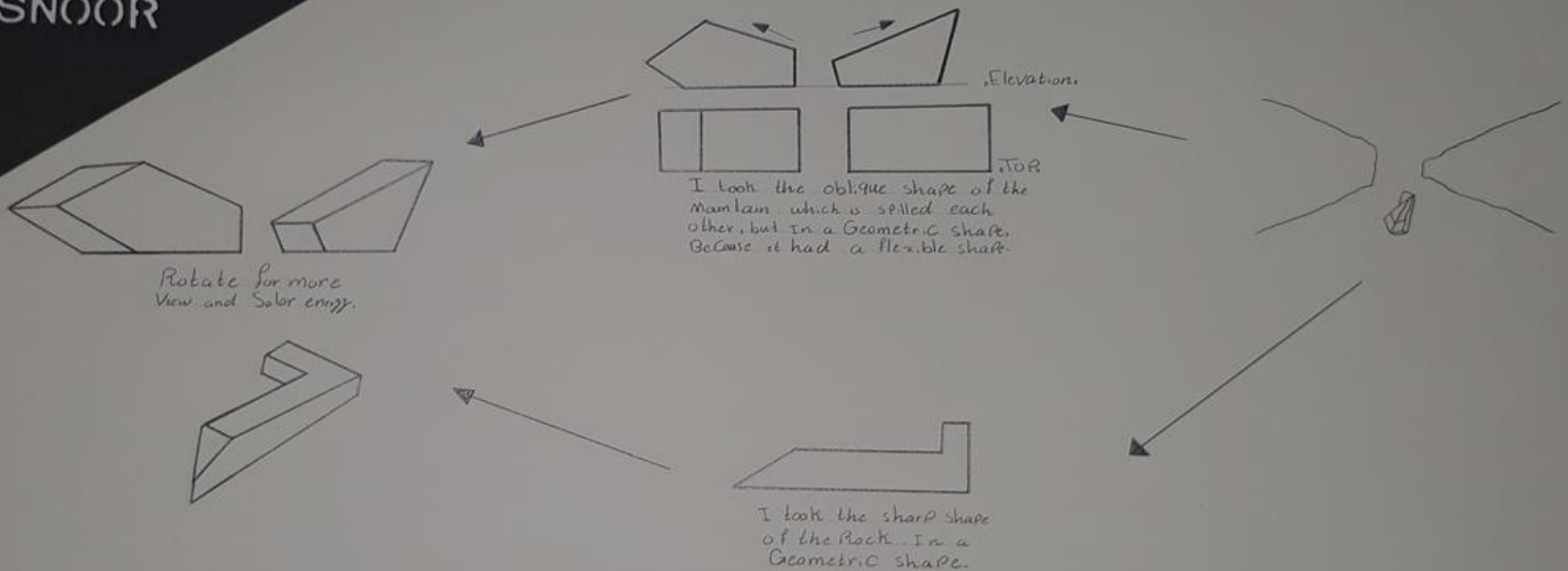
DESIGNED BY: AVAN STAR



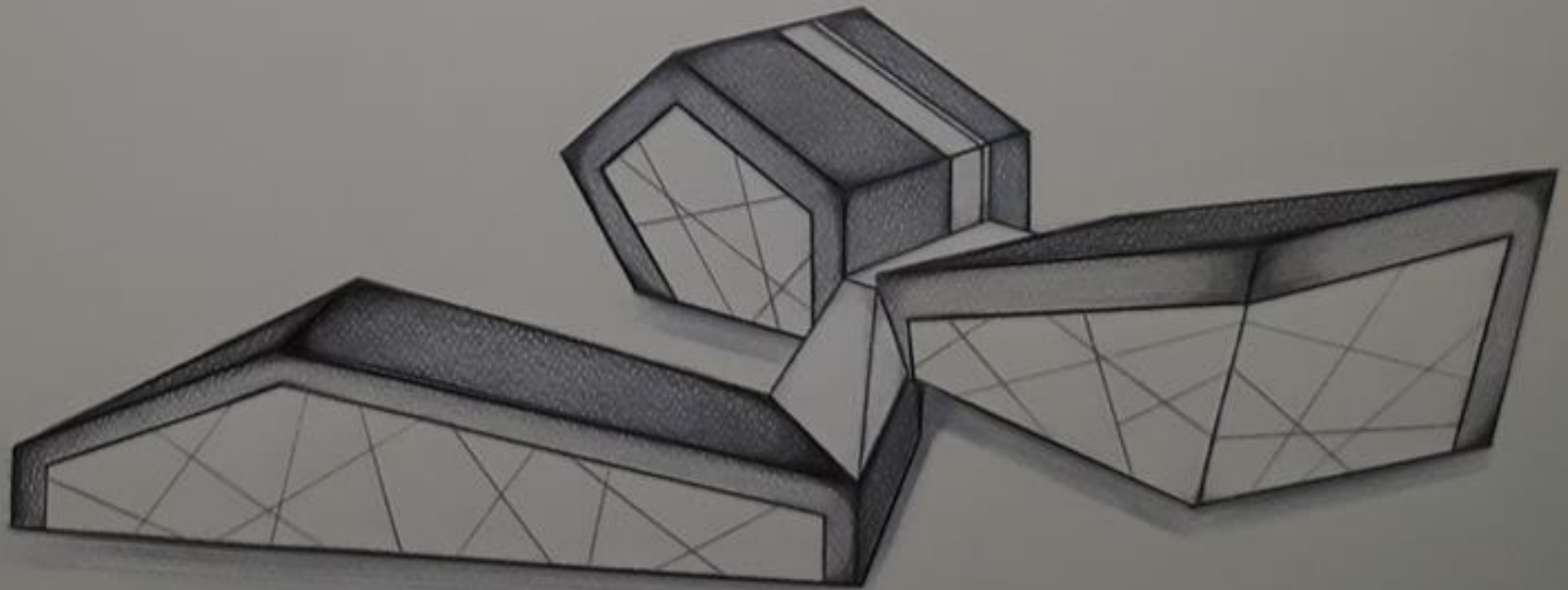
I took my Concept from the two Kurdistan's Mountain which are Called «Bradost and Korek Mountain» that a river Comes through them, and a by Peces mountain like a sharp shape - Heye Rock fallen into the river.

ANALYSIS:

SUPERVISED BY:
M. SUZAN TAHIR
M. AHMAD ISMAIL
M. SNOOR



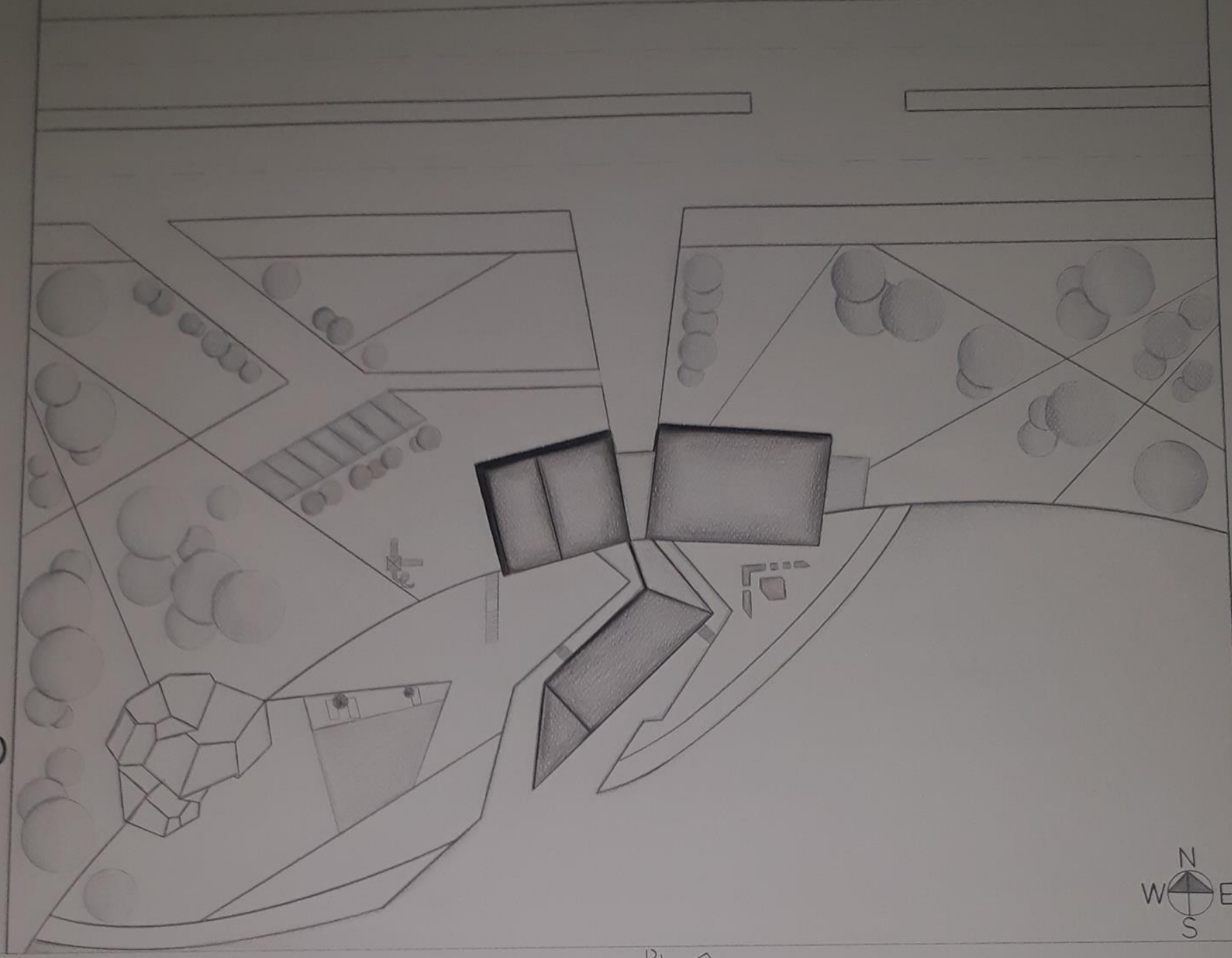
3D MODEL



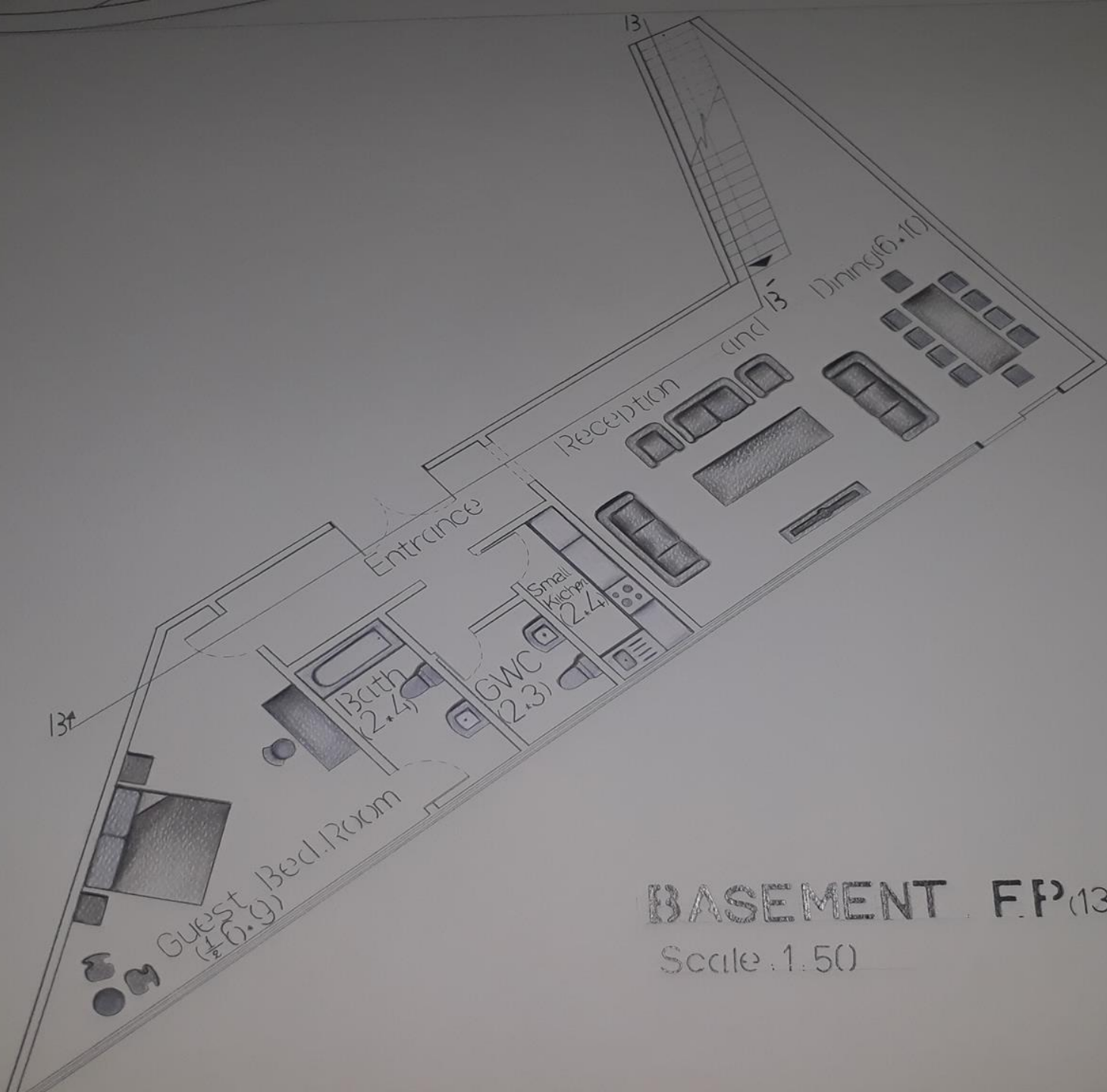
S
I
T
E

P
L
A
N

1:200

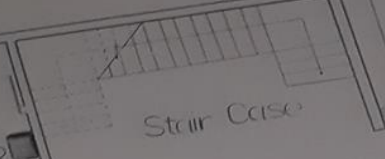
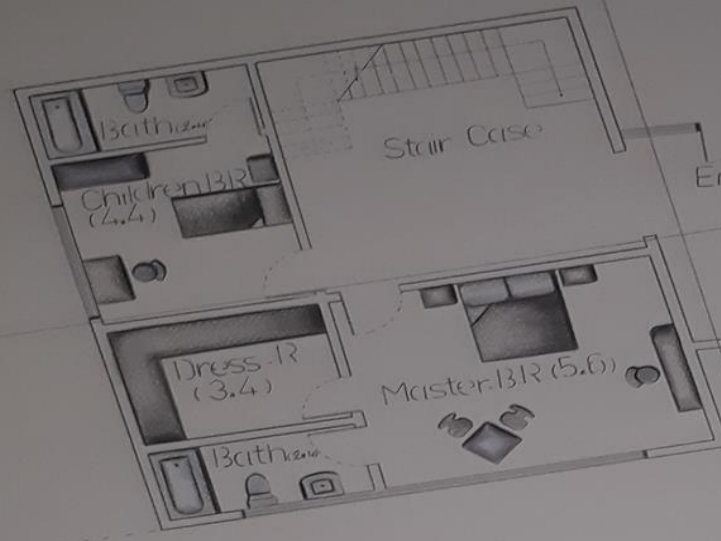


B

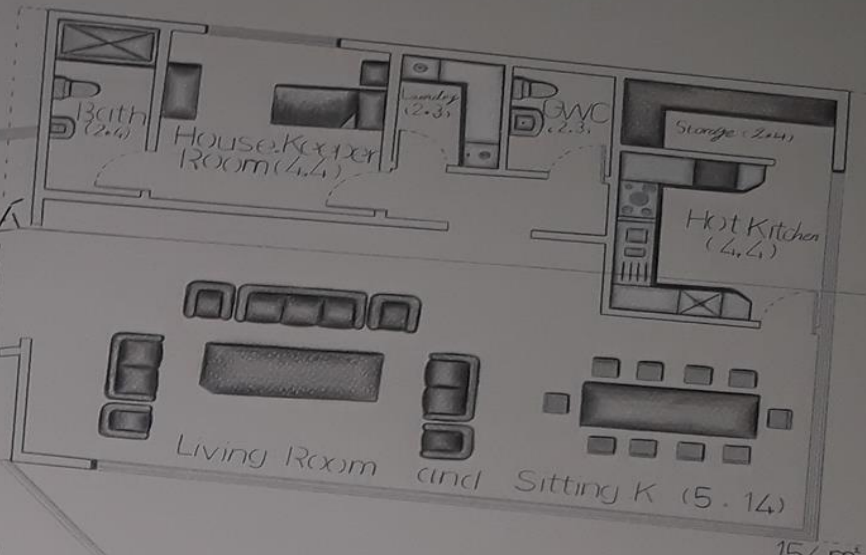


BASEMENT F.P (134m²)

Scale: 1:50



Entrance



110 m²

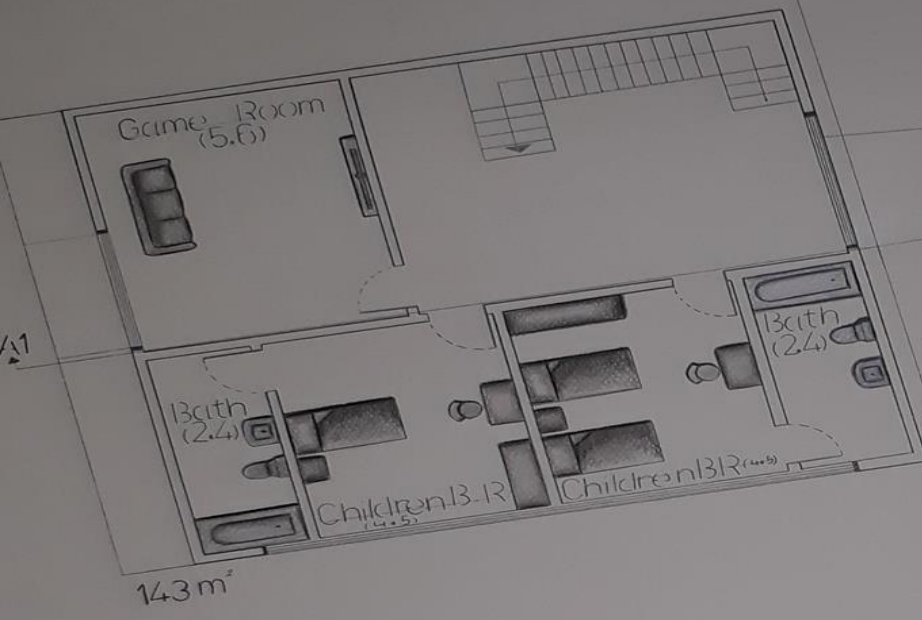
154 m²



B1

B1

GROUND F.P

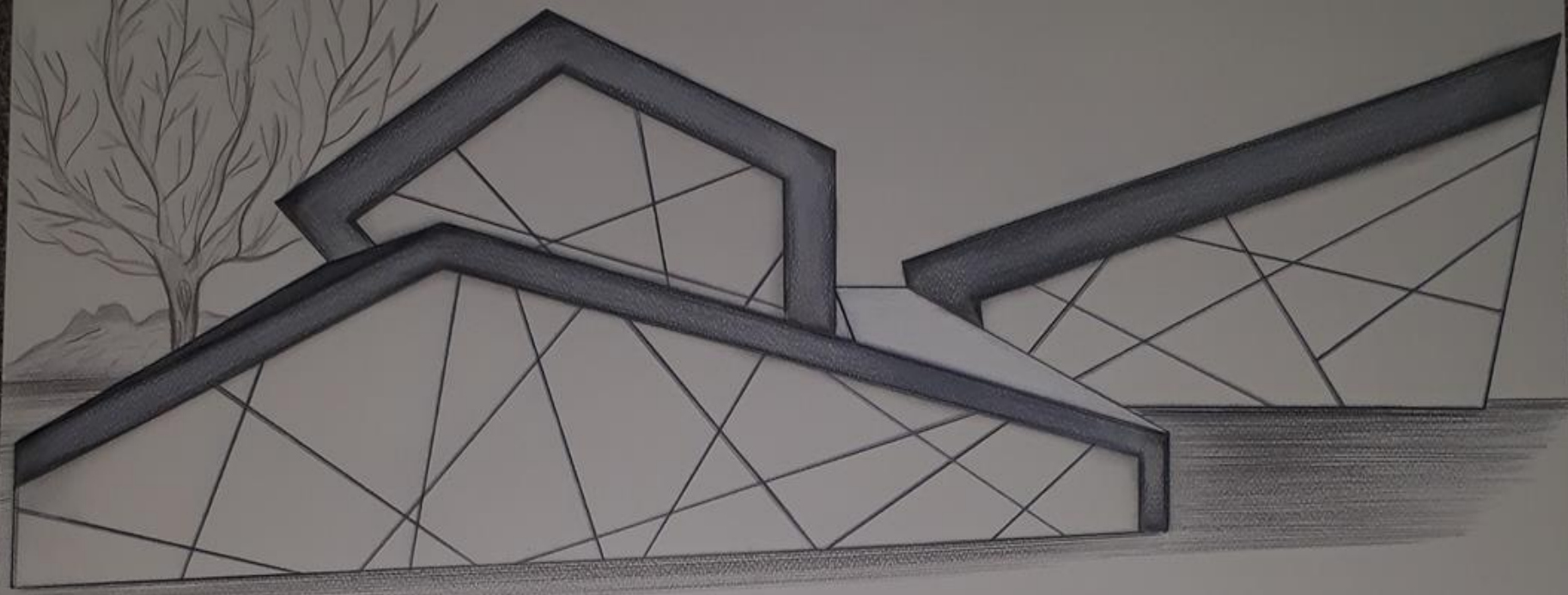


A1

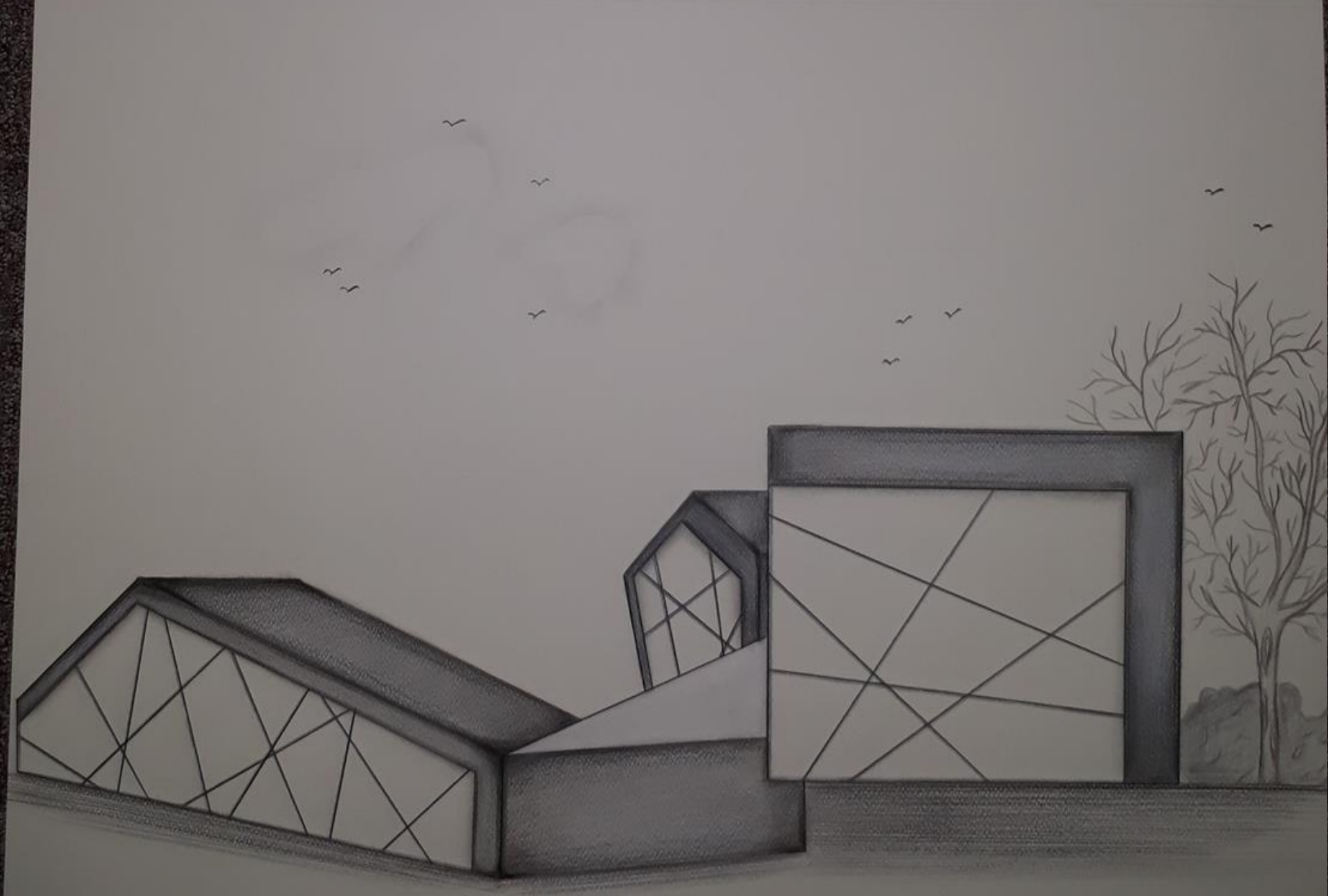
B2

B2

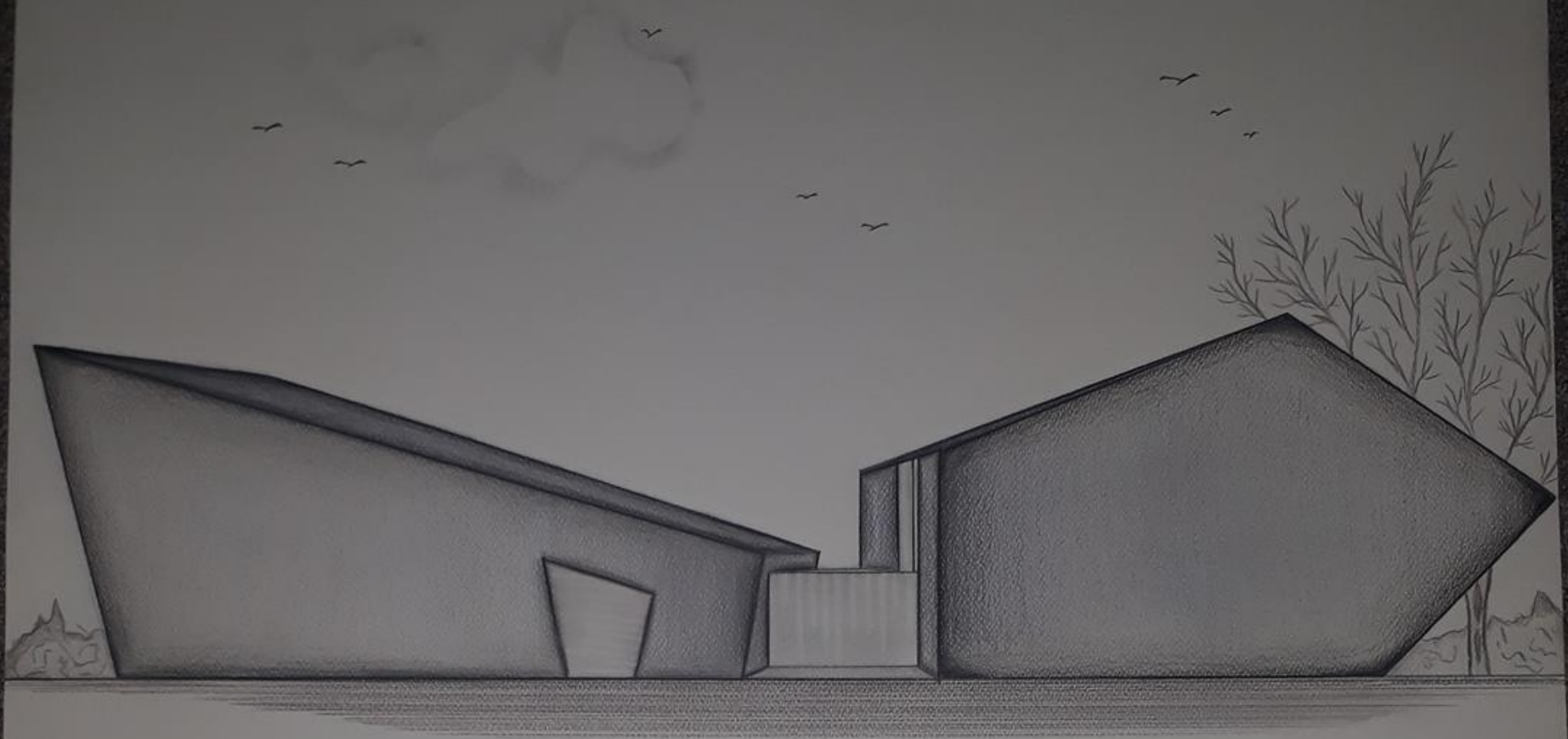
FIRST F.P



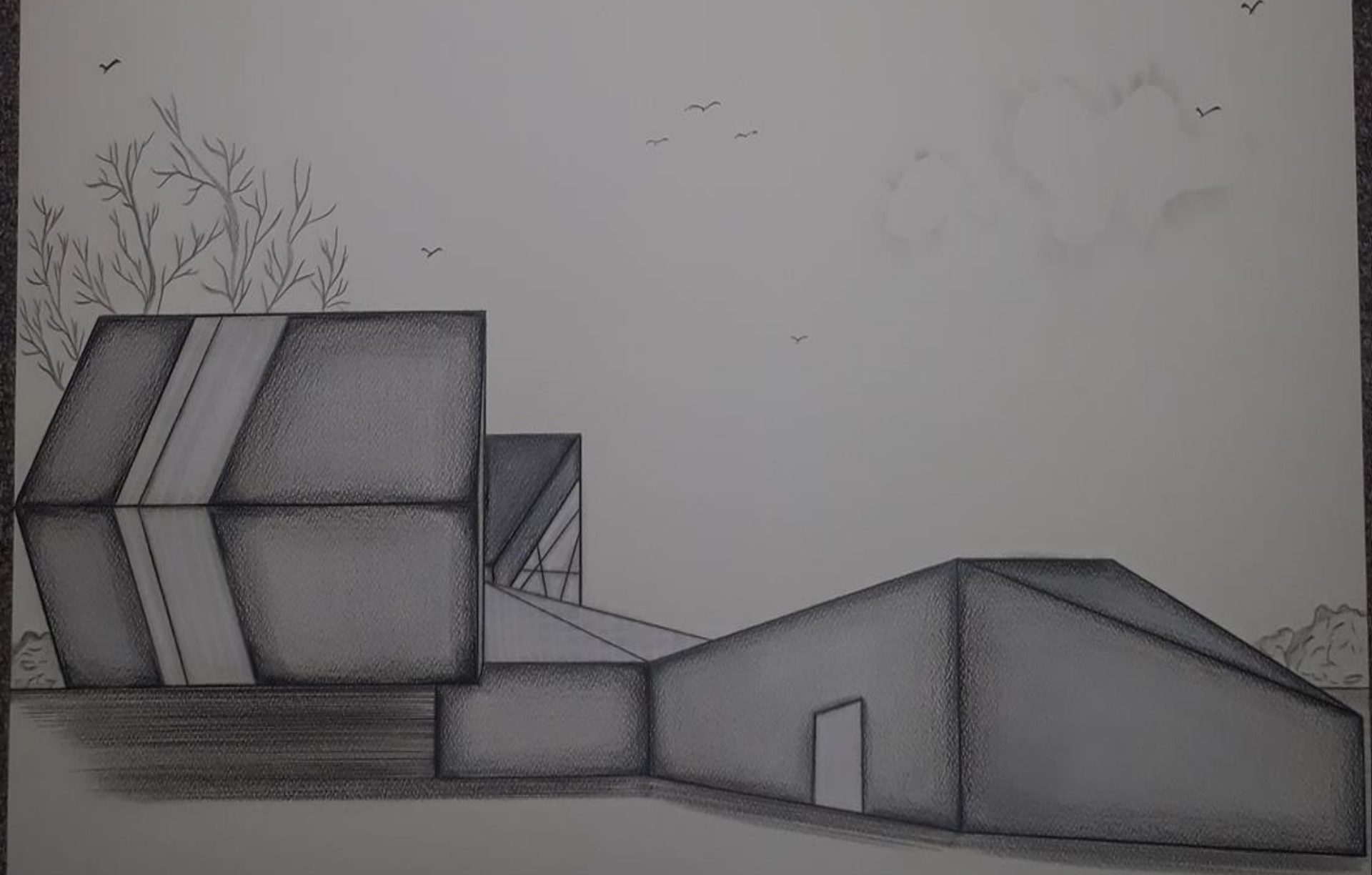
SOUTH ELEVATION
Scale : 1:50



EAST ELEVATION
Scale : 1:50



NORTH ELEVATION
Scale: 1/50



WEST ELEVATION
Scale . 1/50

