

By: Muhammad Surkew  
Supervised By: Dr. Faris

# Documentation of (ERBIL CITADEL ELEVATION) Vernacular Architecture



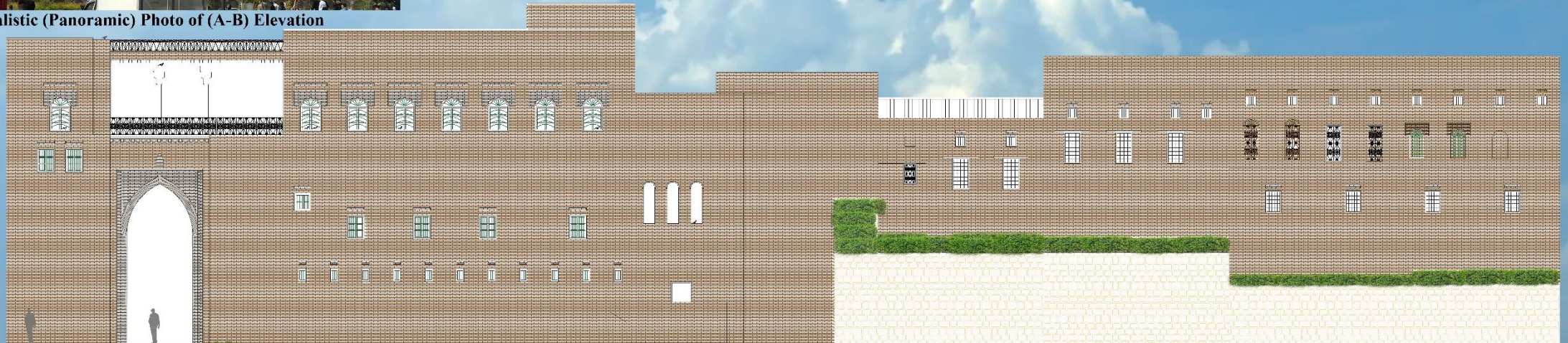
According to the Case Study we took, Each group is Responsible for a certain Determined Sector to Draw its Elevation. My Sector is from Point (A) to (B), as shown on Citadel Masterplan



Realistic (Panoramic) Photo of (A-B) Elevation



Realistic Photos of taken Sector



Citadel Main Elevation

Scale : 1:50

