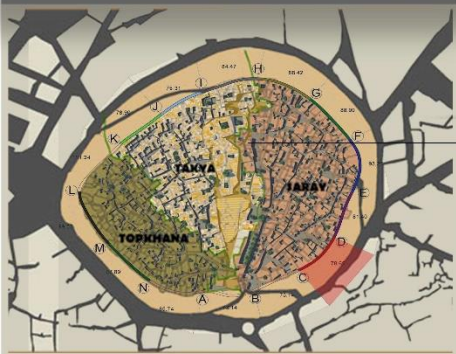


Documentation of Erbil Citadel Elevation

Supervised By: Asst. Prof. Dr. Faris Ali
 Prepared By: Ahmad Ismael
 Padasht Rozhgar
 Eimran Tamer



Location code : C-D
 *The part located in Saray neighbourhood
 *It faces Khanaga by south-east orientation of the citadel.

Photos taken:



Architectural Evaluation

Building type : house Number of floors : 2
Originality: these photos below was taken in 1928 which represent the originality of the facades and stability.
Categorization: Traditional Vernacular



Urban Threshold: the mound made all outside facades of the citadel more private and also give them a view to the neighbourhoods in a height opposing to the outside urban context.



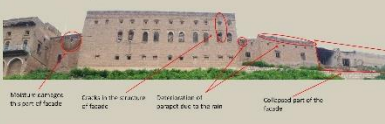
Physical conditions

Appearance of building	good	90%	architectural details, ornaments, high walls, parapet and arches have been used	
connection between parts	bad	40%	no strong relation between different parts (height, windows, size)	
building constructing strength	average	55%	local stones used in foundation, walls are good, roofs in some parts collapsed	
humidity	good	50%	one part due to construction material deterioration has humidity to interior	
ventilation conditions	good	70%	different size of windows and court yards are used	
building construction conditions	good	65%	over all good except of one small part	
building collapsed zone	half of a part	20%	only half of one part is collapsed	
access from entrance	average	60%	it is near from front entrance	
lighting conditions	good	80%	good for having courtyard and different size windows	

Material Types

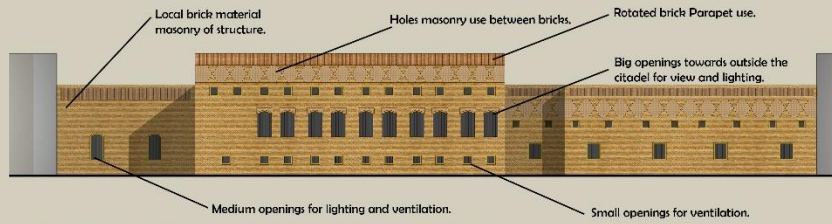
foundation	Local stones have been used for foundation	
walls	Brick material used for walls	
Floor's	wood timber, clay and steel have been used	
Openings	wood, steel and glass are used	

Structure Damages of the facade



Elevation Elements

Types of elements	Dimensions	No.	Drawing	Function of element
windows Type 1	2.5m * 1.2m	10		Lighting, ventilation, view
windows Type 2	1.4m * 1.2m	5		Lighting, ventilation, view
windows Type 3	0.5m * 0.5m	33		Lighting, ventilation
windows Type 4	2.3m * 1.2m	7		Lighting, ventilation, view
windows Type 5	2.2m * 1.45m	2		Lighting, ventilation, view
windows Type 6	0.6m * 0.6m	5		lighting, ventilation
arches	1.35m * 0.35m	12		structural arch, aesthetic
parapet	0.8m * 1.15m	4		Protection, as aesthetic for ornaments
ornament and details	1.5m * 1m	2		Aesthetic
Dalaga	0.6m * 0.6m	11		view, as shell

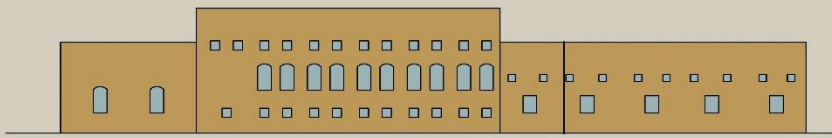


Function of the elevation parts with Materialized Elevation



Symmetry and Centralization

Centerline of Asymmetrical balance to the whole elevation
 Centerline of partial elevations balance



Solid to Void Proportion: *Solid percentage is more due to walls height and lack of entrances in elevation. *Void percentage is less due to small sizes of windows because of privacy and focusing more on courtyard for lighting and ventilation.